



OPEN ACCESS

ORIGINAL ARTICLE

# DCAF4, a novel gene associated with leucocyte telomere length

Massimo Mangino,<sup>1,2</sup> Lene Christiansen,<sup>3,4</sup> Rivka Stone,<sup>5</sup> Steven C Hunt,<sup>6</sup> Kent Horvath,<sup>5</sup> Dan T A Eisenberg,<sup>7,8</sup> Masayuki Kimura,<sup>5</sup> Inge Petersen,<sup>3</sup> Jeremy D Kark,<sup>9</sup> Utz Herbig,<sup>5</sup> Alex P Reiner,<sup>10,11</sup> Athanase Benetos,<sup>12</sup> Veryan Codd,<sup>13,14</sup> Dale R Nyholt,<sup>15</sup> Ronit Sinnreich,<sup>9</sup> Kaare Christensen,<sup>3,4</sup> Hisham Nassar,<sup>16</sup> Shih-Jen Hwang,<sup>17,18</sup> Daniel Levy,<sup>17,18</sup> Veronique Bataille,<sup>1,19</sup> Annette L Fitzpatrick,<sup>10</sup> Wei Chen,<sup>20</sup> Gerald S Berenson,<sup>20</sup> Nilesh J Samani,<sup>13,14</sup> Nicholas G Martin,<sup>15</sup> Sarah Tishkoff,<sup>21</sup> Nicholas J Schork,<sup>22</sup> Kirsten Ohm Kyvik,<sup>3,23,24</sup> Christine Dalgård,<sup>25</sup> Timothy D Spector,<sup>1</sup> Abraham Aviv<sup>5</sup>

► Additional material is published online only. To view please visit the journal online (<http://dx.doi.org/10.1136/jmedgenet-2014-102681>).

For numbered affiliations see end of article.

## Correspondence to

Dr Abraham Aviv, The Center of Human Development and Aging, New Jersey Medical School, UMDNJ, Newark, NJ 07103; [avivab@umdnj.edu](mailto:avivab@umdnj.edu)  
Massimo Mangino, King's College London, Department of Twin Research & Genetic Epidemiology, St. Thomas' Hospital Campus, South Wing, Block D, 3rd Floor, Westminster Bridge Road, London SE1 7EH, UK; [massimo.mangino@kcl.ac.uk](mailto:massimo.mangino@kcl.ac.uk)

Received 28 July 2014

Revised 13 November 2014

Accepted 9 December 2014

## ABSTRACT

**Background** Leucocyte telomere length (LTL), which is fashioned by multiple genes, has been linked to a host of human diseases, including sporadic melanoma. A number of genes associated with LTL have already been identified through genome-wide association studies. The main aim of this study was to establish whether *DCAF4* (DDB1 and CUL4-associated factor 4) is associated with LTL. In addition, using ingenuity pathway analysis (IPA), we examined whether LTL-associated genes in the general population might partially explain the inherently longer LTL in patients with sporadic melanoma, the risk for which is increased with ultraviolet radiation (UVR).

**Results** Genome-wide association (GWA) meta-analysis and de novo genotyping of 20 022 individuals revealed a novel association ( $p=6.4\times 10^{-10}$ ) between LTL and rs2535913, which lies within *DCAF4*. Notably, eQTL analysis showed that rs2535913 is associated with decline in *DCAF4* expressions in both lymphoblastoid cells and sun-exposed skin ( $p=4.1\times 10^{-3}$  and  $2\times 10^{-3}$ , respectively). Moreover, IPA revealed that LTL-associated genes, derived from GWA meta-analysis (N=9190), are over-represented among genes engaged in melanoma pathways. Meeting increasingly stringent p value thresholds ( $p<0.05$ ,  $<0.01$ ,  $<0.005$ ,  $<0.001$ ) in the LTL-GWA meta-analysis, these genes were jointly over-represented for melanoma at p values ranging from  $1.97\times 10^{-169}$  to  $3.42\times 10^{-24}$ .

**Conclusions** We uncovered a new locus associated with LTL in the general population. We also provided preliminary findings that suggest a link of LTL through genetic mechanisms with UVR and melanoma in the general population.

## INTRODUCTION

As expressed in leucocytes, telomere length (TL) is a polygenic trait with heritability estimated at 65%.<sup>1</sup> Genome-wide association (GWA) meta-analyses identified nine loci associated with leucocyte TL (LTL).<sup>2-4</sup> Of these, at least six harbour genes (*TERC*, *TERT*, *NAF1*, *OBFC1*, *CTC1* and *RTEL1*) directly related to telomere homeostasis. LTL, which reflects TL in other somatic cells,<sup>5</sup> is associated with a host of disease. Typically, LTL is short in patients

with cardiovascular disease, principally atherosclerosis,<sup>6</sup> and long in patients with lung adenoma,<sup>7 8</sup> breast cancer,<sup>9 10</sup> pancreatic cancer<sup>11</sup> and sporadic melanoma.<sup>12 13</sup> Moreover, highly penetrant germline mutations in the telomere maintenance genes *POT1* and *TERT* have been recently shown in patients with familial melanoma.<sup>14-16</sup>

In our previous LTL meta-GWA, we found that a single-nucleotide polymorphism (SNP) (rs2535913) lies within the gene encoding the DDB1 and CUL4-associated factor 4 (*DCAF4*) had a barely suggestive association with LTL.<sup>4</sup> In the present study, we present further analysis of rs2535913 through de novo genotyping and in silico look up. As *DDB1* and *CUL4* are engaged in the response to ultraviolet radiation (UVR)<sup>17 18</sup> and given that the risk for sporadic melanoma is increased with an inherently longer LTL<sup>12 13</sup> and UVR,<sup>19-21</sup> we also examined whether rs2535913 is associated with altered expression of *DCAF4* in lymphoblastoid cells and sun-exposed skin and whether LTL-associated genes, in general, might also be associated with genes engaged in melanoma pathways.

## MATERIALS AND METHODS

### Cohorts

A detailed description of demographic characteristics of all cohorts included in this study can be found in online supplementary table S1. Additional details related to the discovery and the replication cohorts can be found elsewhere.<sup>2 4</sup>

In brief, for the discovery data, rs2535913 was extracted from the summary results of a large GWA consortium meta-analysis including six cohorts (the Framingham Heart Study, the Family Heart Study, the Cardiovascular Health Study, the Bogalusa Heart Study, the Hypertension Genetic Epidemiology Network Study and TwinsUK). All the cohorts adjusted for the same covariates (age, age<sup>2</sup>, sex, smoking history).<sup>4</sup> All the samples included in the meta-analysis were of European descent (evidence of non-European ancestry was assessed by principal component analysis comparison with HapMap in each cohort).

**To cite:** Mangino M, Christiansen L, Stone R, et al. *J Med Genet* Published Online First: [please include Day Month Year] doi:10.1136/jmedgenet-2014-102681

## Genome-wide studies

LTL measurement was performed by Southern blot analysis of the mean length (expressed in kilobases) of the terminal restriction fragments, generated by the restriction enzymes *HinfI* and *RsaI* after verification of DNA integrity.<sup>22</sup> The de novo genotyping of rs2535913 was conducted on 3037 samples from different cohorts (Israeli Jews from the Jerusalem LRC Longitudinal Study<sup>23</sup> and Palestinians from the Palestinian-Israeli Jerusalem Risk Factor Study<sup>24</sup>, Frenchmen from the ADELAHYDE—Nancy study and ERA—France study,<sup>25</sup> and Danes from a population sample of Danish twins).<sup>26–31</sup> LTL for these individuals was measured by Southern blots, as in the discovery data set. In the second phase of replication, we performed an in silico look-up of results of LTL-GWAS based on 7795 European descent individuals from four independent cohorts (British Heart Foundation Family Heart Study, Queensland Institute of Medical Research, Brisbane Adolescent Twin Study, United Kingdom Blood Service and an independent sample set from TwinsUK).<sup>2</sup> Mean LTL of these samples was measured using a qPCR-based technique (ref. 2 and expressed as a ratio of telomere repeat length (T) to a copy number of a single copy gene (S)). A calibrator sample or a standard curve was used to standardise T/S results across plates. LTLs in each cohort were standardised using a Z-score transformation. All the cohorts were also adjusted for age and sex in the main analysis.

## LTL meta-analysis

The meta-analysis for the discovery stages was carried out previously using METAL.<sup>32</sup> We used GWAMA (V2.1)<sup>33</sup> to test the meta-analyses of all the cohorts in which LTL was measured (either by Southern blots or qPCR). To this end, we used the inverse variance weighted method to combine the cohort-specific  $\beta$ -estimates. Because the meta-analysis of the entire data set included samples in which LTL was assessed using two different methods, we used the random-effect inverse variance method implemented in GWAMA. In addition, to test the presence and measure the amount of between-study heterogeneity, we used two different metrics: Cochran's Q statistic<sup>34</sup> and  $I^2$ .<sup>35</sup>

## Expression analysis

We used the genome-wide expression data from the lymphoblastoid cell lines (LCLs) from the Multiple Tissue Human Expression Resource (MuTHER).<sup>36</sup> The expression values were derived from a subset of twins from TwinsUK, which were also included in the association analysis. The analysis was performed on rs2535913 and the expression levels of *DCAF4* using MERLIN,<sup>37</sup> taking into account the family structure. For this analysis, the significance was defined as  $p < 0.05$ , as only one independent test was performed.

To validate our results in a different data set and to perform tissue-specific (sun-exposed skin from lower leg) expression analysis, we used data from the Genotype-Tissue Expression (GTEx) project online portal (<http://www.gtexportal.org>).<sup>38</sup>

## Ingenuity pathway analysis

The meta-GWAS data set included in the ingenuity pathway analysis (IPA) Core analysis consisted of 99 773 SNPs that met quality control and had a p value threshold of  $< 0.05$ .

All SNPs mapping in coding region of a gene or within 2 kb upstream/0.5 kb downstream of it were annotated. Using these criteria, IPA successfully mapped 42 395 of the 99 773 initial SNPs to genes. We compiled and analysed four subsets of genes meeting increasingly stringent p value thresholds in the meta-GWA of LTL ( $p < 0.05$ : 7362 genes;  $p < 0.01$ : 2846 genes;  $p < 0.005$ : 1771 genes; and  $p < 0.001$ : 526 genes).

We then compared the LTL-associated genes included in the generated subsets with the genes reported by the IPA Global Canonical Pathway (database accessed on September 2014; <http://www.ingenuity.com>) for melanoma. We finally generated a p value using a  $2 \times 2$  Fisher's exact test comparing the disease vs non-disease status in the LTL-associated genes and in the reference data set (see online supplementary figure S1). All p values were corrected for multiple testing using the Benjamini-Hochberg method.<sup>39</sup>

## RESULTS AND DISCUSSION

Meta-GWAS findings in European descendants have already indicated significant associations of LTL with SNPs mapped to loci of *TERC*, *OBFC1* and *CTC1*—key genes engaged in TL regulation.<sup>2–4</sup> Of the nine SNPs that displayed suggestive associations with LTL ( $5 \times 10^{-7} < p < 5 \times 10^{-8}$ ) in our previous meta-GWAS in 9190 European descendants,<sup>4</sup> seven were mapped to these three gene loci, while the remaining two (rs2535913,  $p = 2 \times 10^{-7}$ ; rs2806040,  $p = 2.61 \times 10^{-7}$ ) lie within *DCAF4*. Because both *DCAF4* variants were in perfect linkage disequilibrium ( $r^2 = 1$ ) (see online supplementary table S2), we focused our attention on rs2535913 and further examined its association with LTL in eight additional cohorts.

We first de novo genotyped 3037 samples from four independent cohorts in which LTL was measured by Southern blots. We found a borderline significant association (possibly due to the small sample size) of the rs2535913 minor allele (A) with short LTL ( $\beta = -0.0343$ ;  $p = 6.13 \times 10^{-2}$ ; table 1).

The overall meta-analysis of the discovery and de novo genotyped cohorts showed a genome-wide significant p value of  $2.31 \times 10^{-8}$ . We then performed an in silico look-up of results of LTL-GWAS based on 7795 individuals from four independent cohorts in which LTL was measured by qPCR.<sup>2</sup> Results showed

**Table 1** Association of *DCAF4* rs2535913 minor allele with leucocyte telomere length in discovery and replication cohorts

Analysis	N	MAF	$\beta$ (SE)	SE	p Value	$I^2$ * (%)	Het pt
Discovery	9190	0.3091	-0.0554‡	0.011	$2 \times 10^{-7}$	18	0.30
Replication 1 (de novo genotyped data set)	3037	0.2743	-0.0343‡	0.018	$6.13 \times 10^{-2}$	29	0.24
Combined (discovery+replication 1)	12 227	0.2991	-0.0505‡	0.009	$2.31 \times 10^{-8}$	21	0.25
Replication 2 (qPCR data set)	7795	0.3144	-0.0451§	0.017	$7.84 \times 10^{-3}$	0	0.70
Combined (all)	20 022	0.3061	-0.0493¶	0.008	$6.38 \times 10^{-10}$	0	0.46

\*Heterogeneity index  $I^2$  by Higgins *et al.*<sup>35</sup>

†Cochran's heterogeneity statistic's p value.

‡Effect reported in kb relative to the minor allele.

§Effect reported in (T/S) ratio relative to the minor allele.

¶Effect reported for the inverse-variance random-effect meta-analysis.

an association of the rs2535913 minor allele with shorter LTL ( $\beta=-0.0451$ ;  $p=7.8\times 10^{-3}$ ) (table 1). The combined meta-analysis, based on 20 022 individuals from the 14 independent populations (6 in the discovery data set, 4 de novo genotyped and 4 in silico look-up populations), showed a significant association ( $\beta=-0.0493$ ;  $p=6.4\times 10^{-10}$ ) of rs2535913 with LTL.

Due to the different characteristics of the studies included in the meta-analysis, we tested the between-study heterogeneity using two different metrics (Cochran's Q statistic and  $I^2$ ). Both methods did not detect between-study heterogeneity ( $I^2=0\%$ ; Cochran's Q  $p=0.46$ ; table 1 and online supplementary figure S2).

Previous studies,<sup>2-4</sup> as well as the present research, showcase the large samples required to decipher the genetics of LTL in the general population. Jointly, the few genes, including *DCAF4*, that have been found thus far to be associated at a genome-wide significance level with LTL explain <5% of the inter-individual variation in LTL.<sup>2</sup>

In order to identify potential causal alleles in the coding sequence, we looked for variants in tight linkage disequilibrium with rs2535913 (LD;  $r^2>0.9$  in 1000 Genomes Project European samples). We identified 15 SNPs (see online supplementary table S2) of which only one (rs2806034) was in the coding region causing a synonymous change (serine to serine) in all the different *DCAF4* transcripts. We also performed a conditional analysis, including rs2535913 as a covariate, to identify potential independent secondary signals at this locus. This analysis did not find any significant evidence for an independent signal (see online supplementary figure S3).

Notably, rs2535913 is located within binding motifs for the chromatin organising factor CTCF and Rad21 (see online supplementary table S2).<sup>40</sup> Rad21 is a component of the cohesin complex involved in DNA repair, apoptosis and chromosome cohesion during the cell cycle. CTCF and cohesin are both integral components of most human subtelomeric regions and have been implicated in telomere maintenance.<sup>41</sup>

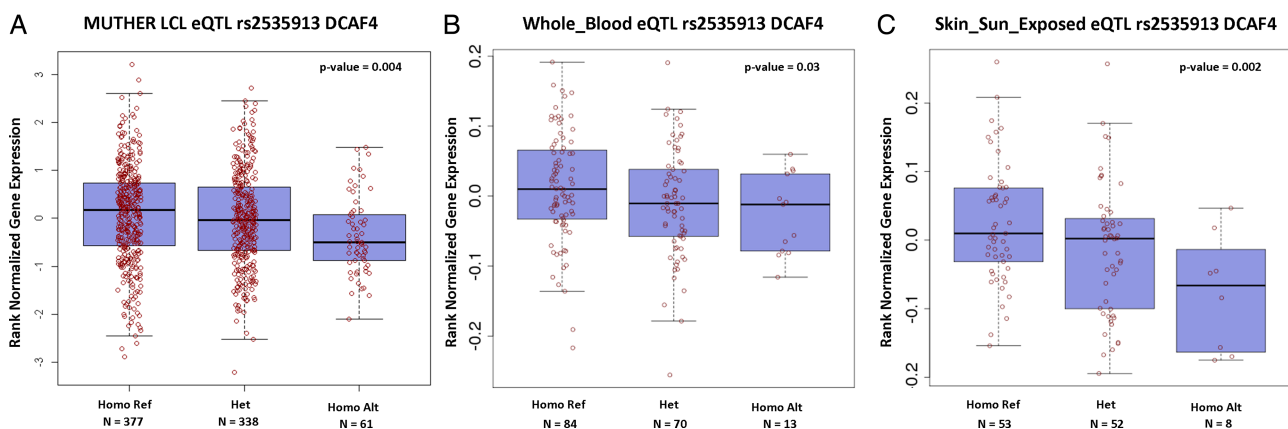
To explore the potentially functional impact of this intronic SNP on *DCAF4*, we used genome-wide expression data from MuTHER<sup>36</sup> (<http://www.muther.ac.uk/>) based on 778 unselected European descendant twins. We first focused our analysis on LCLs. We found that the minor allele (A) of rs2535913 was associated with lower expression of *DCAF4* ( $\beta=-0.039$ ,  $p=4.1\times 10^{-3}$ ) (figure 1A). To validate our results in an independent data set, we used data from the GTEx project online portal (<http://www.gtexportal.org>).<sup>38</sup> We found a significant

association ( $p=3\times 10^{-2}$ ) between rs2535913 and *DCAF4* expression levels measured in whole blood of 167 individuals (figure 1B).

*DCAF4* interacts with DDB1 and CUL4.<sup>18</sup> This interaction suggests that *DCAF4* may be involved in UVR response since DDB1 and DDB2 serve as key detectors of UVR-induced DNA damage and transcription-coupled repair pathways,<sup>17 18</sup> while cullins are engaged in ubiquitin-dependent protein degradation.<sup>42</sup> We, therefore, examined rs2535913-*DCAF4* expression association specifically in sun-exposed skin (lower leg) tissue included in the GTEx database. Notably, despite the small sample size ( $n=113$ ), we observed a significant association ( $p=2\times 10^{-3}$ ) between rs2535913 minor allele and lower *DCAF4* expression levels in sun-exposed skin (figure 1C). Thus, the finding of the LTL-*DCAF4* link might be important not only because it expands the repertoire of common SNPs associated with LTL at genome-wide significant level, but also because it may provide a possible link between TL, as expressed in leucocytes, and UVR.

DDB1 modulates the transcription factor E2F1, which, in turn, regulates cell proliferation and telomerase.<sup>43-45</sup> Thus, cell replication and telomere dynamics might be linked to pathways engaged in UVR-induced DNA damage repair.<sup>46</sup> In this context, the association of LTL with *DCAF4* might be mediated by telomerase, perhaps via E2F1.<sup>43 44 45</sup> That is because mutations indicative of UVR damage in the promoter region of *TERT* are common in melanoma tumours (but very rare in the germline) and apparently generate consensus DNA binding sites, which are targets not only of ETS transcription factors<sup>47</sup> that direct cytoplasmic signals to control gene expression but also E2F1.<sup>48</sup>

We have thus established that *DCAF4* is an LTL-associated gene and that rs2535913 minor allele is associated with decreased *DCAF4* expression in blood and sun-exposed skin, which may suggest *DCAF4* involvement in UVR response. Given that LTL is inherently long in patients with melanoma<sup>12 13</sup> and the increased risk for this cancer with UVR exposure,<sup>19 20 21</sup> we sought further links between LTL-associated genes and melanoma in the general population by testing a polygenic model using the results of our large LTL meta-GWA.<sup>4</sup> This model does not require studying patients with melanoma and is based on the following premise: <10% of melanoma cases are familial.<sup>49</sup> However, based on research in twins, the heritability of sporadic melanoma is approximately 55%.<sup>50</sup> It follows that while familial melanoma is caused by highly penetrant and rare germline mutations, sporadic melanoma might result from the additive



**Figure 1** rs2535913-*DCAF4* expression analysis in (A) MuTHER lymphoblastoid cell line (LCL) samples; (B) whole blood and (C) sun-exposed skin tissues using Genotype-Tissue Expression online database. Homo Ref, homozygous GG; Het, heterozygous GA; Homo Alt, homozygous AA.



## Genome-wide studies

**Table 2** Ingenuity pathway analysis results using increasingly stringent p value thresholds in the LTL meta-GWAS

LTL meta-GWAS threshold	LTL meta-GWAS genes	Genes present in melanoma pathway	p Value
<0.05	7362	3642	$1.97 \times 10^{-169}$
<0.01	2846	1562	$1.08 \times 10^{-100}$
<0.005	1771	999	$3.96 \times 10^{-70}$
<0.001	526	305	$3.42 \times 10^{-24}$

GWAS, genome-wide association studies; LTL, leucocyte telomere length.

effect of common genetic variants in the general population, each of which causally contributes a low risk for the disease.<sup>51</sup> A proof of concept for this premise comes from a recent study in 11 108 melanoma patients and 13 933 controls.<sup>52</sup> The study developed a genetic risk score for melanoma based on seven LTL-associated genes, which had been derived from LTL-GWA studies in the general population.<sup>2–4</sup> Similarly, our polygenic approach has been to take advantage of IPA Core analysis to decipher connections of LTL-associated genes in the general population with genes that had been reported to be engaged in melanoma pathways. To this end, we analysed sets of LTL-associated SNPs that met increasingly stringent p value thresholds in our LTL meta-GWA, as described under 'Materials and methods' (see online supplementary table S3). We then compared the number of LTL-associated genes identified by IPA with the total number of genes related to melanoma in the IPA reference set (see online supplementary figure S1). We found that genes included in the melanoma pathway were over-represented with p values ranging from  $1.97 \times 10^{-169}$  (LTL-associated SNPs p value <0.05) to  $3.42 \times 10^{-24}$  (LTL-associated SNPs p value <0.001) in each LTL-associated gene subset (table 2 and see online supplementary figure S1).

LTL-associated genes were also enriched for genes included in pathways of different types of cancers, although at much less significance than that found for melanoma pathways. We observed, for example, that genes included in the colorectal cancer pathway were over-represented among LTL-associated genes with p values ranging from  $8.57 \times 10^{-62}$  (LTL-associated SNPs p value <0.05) to  $1.28 \times 10^{-6}$  (LTL-associated SNPs p value <0.001).

While findings of a longer LTL in sporadic melanoma are fairly consistent across studies, until recently, no consistency had emerged from studies of the relationship between LTL and other cancers.<sup>53 54</sup> This might be because studies that examined the association of LTL with cancer largely used leucocyte DNA from patients that had already been subjected to chemotherapy, irradiation or both, which probably impacted haematopoiesis and consequently LTL.<sup>53 54</sup> Moreover, sample sizes of the majority of these studies were often too small, which limited the ability to detect significant effects, particularly when qPCR was used to measure telomere DNA content (due to the large measurement error of this method).<sup>55</sup> That being said, recent large-scale prospective studies, which include pooled data, now show that inherently long LTL is associated with lung adenoma, as well as the cancers of breast and pancreas.<sup>7–11</sup> Although hardly applying to all cancers, these findings suggest that an inherently longer LTL might not be unique to patients with melanoma. Cancer is not a single disease, and its causes are multifactorial. Thus, the potential role of telomere biology in carcinogenesis must be contextualised with specific circumstances that depend on the type of cancer, its anatomical

location, the age and sex of the individual and his/her overall genetic makeup with respect to a host of heritable and environmental risks.

In conclusion, the core findings of this work are (a) *DCAF4* is a novel gene that contributes to LTL variation in humans and (b) its expression levels are altered in blood and sun-exposed skin; the latter may suggest a potential role in UVR response. We also provide preliminary evidence that genes associated with LTL are enriched among genes engaged in melanoma pathways in the general population. Our model might be useful in testing the role of LTL genetics in other human cancers.

**Author affiliations**

- Department of Twin Research and Genetic Epidemiology, King's College London, London, UK
- National Institute for Health Research (NIHR) Biomedical Research Centre at Guy's and St. Thomas' Foundation Trust, London, UK
- Epidemiology Unit, The Danish Aging Research Center and The Danish Twin Registry, Institute of Public Health, University of Southern Denmark, Odense, Denmark
- Department of Clinical Genetics, and Department of Clinical Biochemistry and Pharmacology, Odense University Hospital, Odense, Denmark
- Center of Human Development and Aging, Rutgers, The State University of New Jersey, New Jersey Medical School, Newark, New Jersey, USA
- Cardiovascular Genetics Division, Department of Medicine, University of Utah, Salt Lake City, Utah, USA
- Department of Anthropology, University of Washington, Seattle, Washington, USA
- Center for Studies in Demography and Ecology, University of Washington, Seattle, Washington, USA
- Epidemiology Unit, Hebrew University-Hadassah School of Public Health and Community Medicine, Jerusalem, Israel
- Department of Epidemiology, University of Washington, Seattle, Washington, USA
- Public Health Sciences Division, Fred Hutchinson Cancer Research Center, Seattle, Washington, USA
- Department of Geriatrics, Université de Lorraine INSERM U961, Nancy, France
- Department of Cardiovascular Sciences, University of Leicester, Leicester, UK
- National Institute for Health Research (NIHR) Leicester Cardiovascular Biomedical Research Unit, Glenfield Hospital, Leicester, UK
- QIMR Berghofer Medical Research Institute, Brisbane, Australia
- Department of Cardiology, Hadassah University Medical Center, Jerusalem, Israel
- Population Sciences Branch of the National Heart, Lung and Blood Institute, Bethesda, Maryland, USA
- The Framingham Heart Study, Framingham, Massachusetts, USA
- Department of Dermatology, West Herts NHS Trust, Herts, UK
- Center for Cardiovascular Health, Tulane University, New Orleans, Louisiana, USA
- Department of Genetics, University of Pennsylvania, Philadelphia, Pennsylvania, USA
- Department of Molecular and Experimental Medicine, The Scripps Research Institute, San Diego, California, USA
- Institute of Regional Health Services Research, University of Southern Denmark, Odense, Denmark
- Odense Patient data Explorative Network (OPEN), Odense University Hospital, Odense, Denmark
- Institute of Public Health, Environmental Medicine, University of Southern Denmark, Odense, Denmark

**Twitter Id** Twitter Follow Massimo Mangino at Maxmangino

**Contributors** AA, MM, RS, SCH and DTAE conceived and designed the experiments. MM, LC,RS,SCH, DTAE, MK, IP, UH, VC, DRN, SJH and KH analysed and interpreted the data. JDK, APR, AB, RS, KC, HN, DL, ALF, WC, GSB, NJS, NGM, ST, NJS, KOK and CD contributed samples/materials/analysis tool. MM, DTAE, RS and AA wrote the paper. MM, DTAE, RS, VB, TDS and AA reviewed/edited manuscript. All authors approved final manuscript.

**Funding** *TwinsUK*. The study was funded by the Wellcome Trust; European Community's Seventh Framework Programme (FP7/2007-2013). The study also receives support from the National Institute for Health Research (NIHR) BioResource Clinical Research Facility and Biomedical Research Centre based at Guy's and St Thomas' NHS Foundation Trust and King's College London. TDS is holder of an ERC Advanced Principal Investigator award. SNP Genotyping was performed by The Wellcome Trust Sanger Institute and National Eye Institute via NIH/CIDR. *The Bogalusa Heart Study*. This study was supported by grants 5R01ES021724 from National Institute of Environmental Health Science, and 2R01AG016592 from the National Institute on Aging. *The Framingham Heart Study*. Supported by NIH contract N01-HC-25195. This project was supported in part by intramural funding

from the National Heart, Lung, and Blood Institute and the Center for Population Studies of the NHLBI. *CHS*. Cardiovascular Health Study: This CHS research was supported by NHLBI contracts HHSN268201200036C, HHSN26820080007C, N01HC55222, N01HC85079, N01HC85080, N01HC85081, N01HC85082, N01HC85083, N01HC85086; and NHLBI grants HL080295, HL087652, HL105756 with additional contribution from the National Institute of Neurological Disorders and Stroke (NINDS). Additional support was provided through AG023629 from the National Institute on Aging (NIA). A full list of CHS investigators and institutions can be found at <http://chs-nhlbi.org/>. *The Center of Human Development and Aging*. AA grant support: NIH: Human Telomere Genetics R01AG20132; Telomeres & Vascular Aging, R01AG21593; Leukocyte Telomere Dynamics, Gender, Menopause, Insulin Resistance, R01AG030678. *BHF-FHS*. The British Heart Foundation Family Heart Study (BHF-FHS) was funded by the British Heart Foundation (BHF). Genotyping of the BHF-FHS study was undertaken as part of the WTCCC and funded by the Wellcome Trust. NJS holds a chair funded by the BHF and VC is funded by the BHF. VC and NJS are supported by the NIHR Leicester Cardiovascular Biomedical Research Unit and NJS holds an NIHR Senior Investigator award. The Jerusalem LRC Longitudinal Study The study was funded by the US-Israel Binational Science Foundation and the Israel Science Foundation. *Palestinian-Israeli Jerusalem Risk Factor Study*. The study was funded by the US-AID Program for Middle Eastern Regional Cooperation. *ADELAHYDE—Nancy study and ERA—France study*. The study received support from the French Fondation pour la Recherche Médicale (FRM DCV2007-0409250) and the Plan Pluriformation (PPF815 PSVT-2005). Special thanks to Ms Cynthia Thiriout (INSERM U961, Nancy France) for her contribution to the genotyping of French cohorts. *Hypertension Genetic Epidemiology Network Study (HyperGEN)*. HyperGEN was supported by cooperative agreements HL54471, HL54472, HL54473, HL54495, HL54496, HL54509, HL54515 and grant HL055673. HyperGEN investigators and institutions can be found at <http://www.biostat.wustl.edu/hypergen/hypergen.shtml>. *Queensland Institute of Medical Research (QIMR)*. We thank Marlene Grace, Ann Eldridge, and Kerrie McAloney for sample collection; Megan Campbell, Lisa Bowdler, Sara Smith, Steven Crooks, and staff of the Molecular Epidemiology Laboratory for sample processing and preparation; Harry Beeby, David Smyth, and Daniel Park for IT/database support; Scott Gordon for his substantial efforts involving the QC and preparation of the GWA data; and the twins and their families for their participation. We acknowledge support from the Australian Research Council (A7960034, A79906588, A79801419, DP0212016, and DP0343921). Telomere length assessment was co-funded by the European Community's Seventh Framework Programme (FP7/2007-2013), ENGAGE project, grant agreement HEALTH-F4-2007-201413 and National Health and Medical Research Council (NHMRC)-European Union Collaborative Research Grant 496739. GWM was supported by an NHMRC Fellowship (619667), DRN (FT0991022) and SEM (FT110100548) were supported by an ARC Future Fellowship. Genotyping was funded by the NHMRC (Medical Bioinformatics Genomics Proteomics Program, 389891). Genotype imputation was carried out on the Genetic Cluster Computer (<http://www.geneticcluster.org>), which is financially supported by the Netherlands Scientific Organisation (NWO 480-05-003). *UKBS*. The UK Blood Services collection of Common Controls (UKBS-CC collection) is supported by the Wellcome Trust grant 076113/C/04/Z and the collection was established as part of the Wellcome Trust Case Control Consortium. WHO is supported by a NIHR programme grant to NHSBT (RP-PG-0310-1002) and is a NIHR Senior Investigator.

**Competing interests** None.

**Patient consent** All participants provided written informed consent, including permission for genetic analysis and the use of DNA for the measurement of LTL.

**Ethics approval** All studies involved in this research received institutional review board approvals.

**Provenance and peer review** Not commissioned; externally peer reviewed.

**Open Access** This is an Open Access article distributed in accordance with the Creative Commons Attribution Non Commercial (CC BY-NC 4.0) license, which permits others to distribute, remix, adapt, build upon this work non-commercially, and license their derivative works on different terms, provided the original work is properly cited and the use is non-commercial. See: <http://creativecommons.org/licenses/by-nc/4.0/>

## REFERENCES

- 1 Broer L, Codd V, Nyholt DR, Deelen J, Mangino M, Willemsen G, Albrecht E, Amin N, Beekman M, de Geus EJ, Henders A, Nelson CP, Steves CJ, Wright MJ, de Craen AJ, Isaacs A, Matthews M, Moayyeri A, Montgomery GW, Oostra BA, Vink JM, Spector TD, Slagboom PE, Martin NG, Samani NJ, van Duijn CM, Boomsma DI. Meta-analysis of telomere length in 19,713 subjects reveals high heritability, stronger maternal inheritance and a paternal age effect. *Eur J Hum Genet* 2013;21:1163–8.
- 2 Codd V, Nelson CP, Albrecht E, Mangino M, Deelen J, Buxton JL, Hottenga JJ, Fischer K, Esko T, Surakka I, Broer L, Nyholt DR, Mateo Leach I, Salo P, Hagg S, Matthews MK, Palmen J, Norata GD, O'Reilly PF, Saleheen D, Amin N, Balmforth AJ, Beekman M, de Boer RA, Bohringer S, Braund PS, Burton PR, de Craen AJ, Denniff M, Dong Y, Douroudis K, Dubinina E, Eriksson JG, Garlaschelli K, Guo D, Hartikainen AL, Henders AK, Houwing-Duistermaat JJ, Kananel L, Karssen LC, Kettunen J, Klopp N, Lagou V, van Leeuwen EM, Madden PA, Magi R, Magnusson PK, Mannisto S, McCarthy MI, Medland SE, Mihailov E, Montgomery GW, Oostra BA, Palotie A, Peters A, Pollard H, Pouta A, Prokopenko I, Ripatti S, Salomaa V, Suchman HE, Valdes AM, Verweij N, Vinuela A, Wang X, Wichmann HE, Widen E, Willemsen G, Wright MJ, Xia K, Xiao X, van Veldhuisen DJ, Catapano AL, Tobin MD, Hall AS, Blakemore AI, van Gilst WH, Zhu H, Consortium C, Erdmann J, Reilly MP, Kathiresan S, Schunkert H, Talmud PJ, Pedersen NL, Perola M, Ouweland W, Kaprio J, Martin NG, van Duijn CM, Hovatta I, Gieger C, Metspalu A, Boomsma DI, Jarvelin MR, Slagboom PE, Thompson JR, Spector TD, van der Harst P, Samani NJ. Identification of seven loci affecting mean telomere length and their association with disease. *Nat Genet* 2013;45:422–7.
- 3 Levy D, Neuhausen SL, Hunt SC, Kimura M, Hwang SJ, Chen W, Bis JC, Fitzpatrick AL, Smith E, Johnson AD, Gardner JR, Srinivasan SR, Schork N, Rotter JJ, Herbig U, Psaty BM, Sastry M, Murray SS, Vasani RS, Province MA, Glazer NL, Lu X, Cao X, Kronmal R, Mangino M, Soranzo N, Spector TD, Berenson GS, Aviv A. Genome-wide association identifies OBF1 as a locus involved in human leukocyte telomere biology. *Proc Natl Acad Sci USA* 2010;107:9293–8.
- 4 Mangino M, Hwang SJ, Spector TD, Hunt SC, Kimura M, Fitzpatrick AL, Christiansen L, Petersen I, Elbers CC, Harris T, Chen W, Srinivasan SR, Kark JD, Benetos A, El Shemieh S, Visvikis-Siest S, Christensen K, Berenson GS, Valdes AM, Vinuela A, Garcia M, Arnett DK, Broeckel U, Province MA, Pankow JS, Kammerer C, Liu Y, Nalls M, Tishkoff S, Thomas F, Ziv E, Psaty BM, Bis JC, Rotter JJ, Taylor KD, Smith E, Schork NJ, Levy D, Aviv A. Genome-wide meta-analysis points to CTC1 and ZNF676 as genes regulating telomere homeostasis in humans. *Hum Mol Genet* 2012;21:5385–94.
- 5 Daniali L, Benetos A, Susser E, Kark JD, Labat C, Kimura M, Desai K, Granick M, Aviv A. Telomeres shorten at equivalent rates in somatic tissues of adults. *Nat Commun* 2013;4:1597.
- 6 Aviv A. Genetics of leukocyte telomere length and its role in atherosclerosis. *Mutat Res* 2012;730:68–74.
- 7 Seow WJ, Cawthon RM, Purdue MP, Hu W, Gao YT, Huang WY, Weinstein SJ, Ji BT, Virtamo J, Hosgood HD III, Bassig BA, Shu XO, Cai Q, Xiang YB, Min S, Chow WH, Berndt SI, Kim C, Lim U, Albanes D, Caporaso NE, Chanock S, Zheng W, Rothman N, Lan Q. Telomere length in white blood cell DNA and lung cancer: a pooled analysis of three prospective cohorts. *Cancer Res* 2014;74:4090–8.
- 8 Sanchez-Espiridon B, Chen M, Chang JY, Lu C, Chang DW, Roth JA, Wu X, Gu J. Telomere length in peripheral blood leukocytes and lung cancer risk: a large case-control study in Caucasians. *Cancer Res* 2014;74:2476–86.
- 9 Qu S, Wen W, Shu XO, Chow WH, Xiang YB, Wu J, Ji BT, Rothman N, Yang G, Cai Q, Gao YT, Zheng W. Association of leukocyte telomere length with breast cancer risk: nested case-control findings from the Shanghai Women's Health Study. *Am J Epidemiol* 2013;177:617–24.
- 10 Pellatt AJ, Wolff RK, Torres-Mejia G, John EM, Herrick JS, Lundgreen A, Baumgartner KB, Giuliano AR, Hines LM, Fejerman L, Cawthon R, Slattery ML. Telomere length, telomere-related genes, and breast cancer risk: the breast cancer health disparities study. *Genes Chromosomes Cancer* 2013;52:595–609.
- 11 Lynch SM, Major JM, Cawthon R, Weinstein SJ, Virtamo J, Lan Q, Rothman N, Albanes D, Stolzenberg-Solomon RZ. A prospective analysis of telomere length and pancreatic cancer in the alpha-tocopherol beta-carotene cancer (ATBC) prevention study. *Int J Cancer* 2013;133:2672–80.
- 12 Anic GM, Sondak VK, Messina JL, Fenske NA, Zager JS, Cherpelis BS, Lee JH, Fulp WJ, Epling-Burnette PK, Park JY, Rollison DE. Telomere length and risk of melanoma, squamous cell carcinoma, and basal cell carcinoma. *Cancer Epidemiol* 2013;37:434–9.
- 13 Nan H, Du M, De Vivo I, Manson JE, Liu S, McTiernan A, Curb JD, Lessin LS, Bonner MR, Guo Q, Qureshi AA, Hunter DJ, Han J. Shorter telomeres associate with a reduced risk of melanoma development. *Cancer Res* 2011;71:6758–63.
- 14 Horn S, Figl A, Rachakonda PS, Fischer C, Sucker A, Gast A, Kadel S, Moll I, Nagore E, Hemminki K, Schandendorf D, Kumar R. TERT promoter mutations in familial and sporadic melanoma. *Science* 2013;339:959–61.
- 15 Robles-Espinoza CD, Harland M, Ramsay AJ, Aoude LG, Quesada V, Ding Z, Pooley KA, Pritchard AL, Tiffen JC, Petljak M, Palmer JM, Symmons J, Johansson P, Stark MS, Gartside MG, Snowden H, Montgomery GW, Martin NG, Liu JZ, Choi J, Makowski M, Brown KM, Dunning AM, Keane TM, Lopez-Otin C, Gruis NA, Hayward NK, Bishop DT, Newton-Bishop JA, Adams DJ. POT1 loss-of-function variants predispose to familial melanoma. *Nat Genet* 2014;46:478–81.
- 16 Shi J, Yang XR, Ballew B, Rotunno M, Calista D, Fargnoli MC, Ghiorzo P, Bressac-de Paillerets B, Nagore E, Avril MF, Caporaso NE, McMaster ML, Cullen M, Wang Z, Zhang X, Group NDCSW, Laboratory NDCGR, French Familial Melanoma Study G, Bruno W, Pastorino L, Queirolo P, Banuls-Roca J, Garcia-Casado Z, Vaysse A, Mohamdi H, Riazalhosseini Y, Foglio M, Jouenne F, Hua X, Hyland PL, Yin J, Vallabhaneni H, Chai W, Minghetti P, Pellegrini C, Ravichandran S, Eggertson A, Lathrop M, Peris K, Scarra GB, Landi G, Savage SA, Sampson JN, He J, Yeager M, Goldin LR, Demenais F, Chanock SJ, Tucker MA, Goldstein AM, Liu Y, Landi MT. Rare missense variants in POT1 predispose to familial cutaneous malignant melanoma. *Nat Genet* 2014;46:482–6.

## Genome-wide studies

- 17 Iovine B, Iannella ML, Bevilacqua MA. Damage-specific DNA binding protein 1 (DDB1): a protein with a wide range of functions. *Int J Biochem Cell Biol* 2011;43:1664–7.
- 18 Scrima A, Fischer ES, Lingaraju GM, Bohm K, Cavadini S, Thoma NH. Detecting UV-lesions in the genome: The modular CRL4 ubiquitin ligase does it best! *FEBS Lett* 2011;585:2818–25.
- 19 Bataille V. Genetic epidemiology of melanoma. *Eur J Cancer* 2003;39:1341–7.
- 20 Richards TB, Johnson CJ, Tatalovich Z, Cockburn M, Eide MJ, Henry KA, Lai SM, Cherala SS, Huang Y, Ajani UA. Association between cutaneous melanoma incidence rates among white US residents and county-level estimates of solar ultraviolet exposure. *J Am Acad Dermatol* 2011;65(5 Suppl 1):S50–7.
- 21 Veierod MB, Adami HO, Lund E, Armstrong BK, Weiderpass E. Sun and solarium exposure and melanoma risk: effects of age, pigmentary characteristics, and nevi. *Cancer Epidemiol Biomarkers Prev* 2010;19:111–20.
- 22 Kimura M, Stone RC, Hunt SC, Skurnick J, Lu X, Cao X, Harley CB, Aviv A. Measurement of telomere length by the Southern blot analysis of terminal restriction fragment lengths. *Nat Protoc* 2010;5:1596–607.
- 23 Kark JD, Goldberger N, Kimura M, Sinnreich R, Aviv A. Energy intake and leukocyte telomere length in young adults. *Am J Clin Nutr* 2012;95:479–87.
- 24 Kark JD, Nassar H, Shaham D, Sinnreich R, Goldberger N, Aboudi V, Bogot NR, Kimura M, Aviv A. Leukocyte telomere length and coronary artery calcification in Palestinians. *Atherosclerosis* 2013;229:363–8.
- 25 Benetos A, Adamopoulos C, Bureau JM, Temmar M, Labat C, Bean K, Thomas F, Pannier B, Asmar R, Zureik M, Safar M, Guize L. Determinants of accelerated progression of arterial stiffness in normotensive subjects and in treated hypertensive subjects over a 6-year period. *Circulation* 2002;105:1202–7.
- 26 Andersen-Ranberg K, Schroll M, Jeune B. Healthy centenarians do not exist, but autonomous centenarians do: a population-based study of morbidity among Danish centenarians. *J Am Geriatr Soc* 2001;49:900–8.
- 27 Benyamin B, Sorensen TI, Schouboe K, Fenger M, Visscher PM, Kyvik KO. Are there common genetic and environmental factors behind the endophenotypes associated with the metabolic syndrome? *Diabetologia* 2007;50:1880–8.
- 28 Gunn DA, Rexbye H, Griffiths CE, Murray PG, Fereday A, Catt SD, Tomlin CC, Strongitharm BH, Perrett DI, Catt M, Mayes AE, Messenger AG, Green MR, van der Ouderaa F, Vaupel JW, Christensen K. Why some women look young for their age. *PLoS One* 2009;4:e8021.
- 29 Nybo H, Gaist D, Jeune B, Bathum L, McGue M, Vaupel JW, Christensen K. The Danish 1905 cohort: a genetic-epidemiological nationwide survey. *J Aging Health* 2001;13:32–46.
- 30 Skytthe A, Kyvik K, Holm NV, Vaupel JW, Christensen K. The Danish Twin Registry: 127 birth cohorts of twins. *Twin Res* 2002;5:352–7.
- 31 Soerensen M, Thinggaard M, Nygaard M, Dato S, Tan Q, Hjelmborg J, Andersen-Ranberg K, Stevnsner T, Bohr VA, Kimura M, Aviv A, Christensen K, Christiansen L. Genetic variation in TERT and TERC and human leukocyte telomere length and longevity: a cross-sectional and longitudinal analysis. *Aging Cell* 2012;11:223–7.
- 32 Willer CJ, Li Y, Abecasis GR. METAL: fast and efficient meta-analysis of genomewide association scans. *Bioinformatics* 2010;26:2190–1.
- 33 Magi R, Morris AP. GWAMA: software for genome-wide association meta-analysis. *BMC Bioinformatics* 2010;11:288.
- 34 Cochran WG. The combination of estimates from different experiments. *Biometrics* 1954;10:101–29.
- 35 Higgins JP, Thompson SG, Deeks JJ, Altman DG. Measuring inconsistency in meta-analyses. *BMJ* 2003;327:557–60.
- 36 Grundberg E, Small KS, Hedman AK, Nica AC, Buil A, Keildson S, Bell JT, Yang TP, Meduri E, Barrett A, Nisbett J, Sekowska M, Wilk A, Shin SY, Glass D, Travers M, Min JL, Ring S, Ho K, Thorleifsson G, Kong A, Thorsteindottir U, Ainali C, Dimas AS, Hassanali N, Ingle C, Knowles D, Krestyaninova M, Lowe CE, Di Meglio P, Montgomery SB, Parts L, Potter S, Surdulescu G, Tsaprouni L, Tsoka S, Bataille V, Durbin R, Nestle FO, O'Rahilly S, Soranzo N, Lindgren CM, Zondervan KT, Ahmadi KR, Schadt EE, Stefansson K, Smith GD, McCarthy MI, Deloukas P, Dermitzakis ET, Spector TD, Multiple Tissue Human Expression Resource C. Mapping cis- and trans-regulatory effects across multiple tissues in twins. *Nat Genet* 2012;44:1084–9.
- 37 Abecasis GR, Cherny SS, Cookson WO, Cardon LR. Merlin—rapid analysis of dense genetic maps using sparse gene flow trees. *Nat Genet* 2002;30:97–101.
- 38 GTEx Consortium. The Genotype-Tissue Expression (GTEx) project. *Nat Genet* 2013;45:580–5.
- 39 Benjamini Y, Hochberg Y. Controlling the false discovery rate: a practical and powerful approach to multiple testing. *J Roy Stat Soc: Statistical Methodology* 1995;57:289–300.
- 40 Ward LD, Kellis M. HaploReg: a resource for exploring chromatin states, conservation, and regulatory motif alterations within sets of genetically linked variants. *Nucleic Acids Res* 2012;40(Database issue):D930–4.
- 41 Deng Z, Wang Z, Stong N, Plasschaert R, Moczan A, Chen HS, Hu S, Wikramasinghe P, Davuluri RV, Bartolomei MS, Riethman H, Lieberman PM. A role for CTCF and cohesin in subtelomere chromatin organization, TERRA transcription, and telomere end protection. *EMBO J* 2012;31:4165–78.
- 42 Sarikas A, Hartmann T, Pan ZQ. The cullin protein family. *Genome Biol* 2011;12:220.
- 43 Alonso MM, Fueyo J, Shay JW, Aldape KD, Jiang H, Lee OH, Johnson DG, Xu J, Kondo Y, Kanzawa T, Kyo S, Bekele BN, Zhou X, Nigro J, McDonald JM, Yung WK, Gomez-Manzano C. Expression of transcription factor E2F1 and telomerase in glioblastomas: mechanistic linkage and prognostic significance. *J Natl Cancer Inst* 2005;97:1589–600.
- 44 Alonso MM, Fueyo J, Yung WK, Gomez-Manzano C. E2F1 and telomerase: alliance in the dark side. *Cell Cycle* 2006;5:930–5.
- 45 Hayes S, Shiyonov P, Chen X, Raychaudhuri P. DDB, a putative DNA repair protein, can function as a transcriptional partner of E2F1. *Mol Cell Biol* 1998;18:240–9.
- 46 Cui R, Widlund HR, Feige E, Lin JY, Wilensky DL, Igras VE, D'Orazio J, Fung CY, Schanbacher CF, Granter SR, Fisher DE. Central role of p53 in the suntan response and pathologic hyperpigmentation. *Cell* 2007;128:853–64.
- 47 Huang FW, Hodis E, Xu MJ, Kryukov GV, Chin L, Garraway LA. Highly recurrent TERT promoter mutations in human melanoma. *Science* 2013;339:957–9.
- 48 Roussel MF, Davis JN, Cleveland JL, Ghysdael J, Hiebert SW. Dual control of myc expression through a single DNA binding site targeted by ets family proteins and E2F-1. *Oncogene* 1994;9:405–15.
- 49 Olsen CM, Carroll HJ, Whiteman DC. Familial melanoma: a meta-analysis and estimates of attributable fraction. *Cancer Epidemiol Biomarkers Prev* 2010;19:65–73.
- 50 Shekar SN, Duffy DL, Youl P, Baxter AJ, Kvaskoff M, Whiteman DC, Green AC, Hughes MC, Hayward NK, Coates M, Martin NG. A population-based study of Australian twins with melanoma suggests a strong genetic contribution to liability. *J Invest Dermatol* 2009;129:2211–19.
- 51 Law MH, Macgregor S, Hayward NK. Melanoma genetics: recent findings take us beyond well-traveled pathways. *J Invest Dermatol* 2012;132:1763–74.
- 52 Iles MM, Bishop DT, Taylor JC, Hayward NK, Brossard M, Cust AE, Dunning AM, Lee JE, Moses EK, Akslen LA, Investigators A, Andresen PA, Avril MF, Azizi E, Scarra GB, Brown KM, Debnik T, Elder DE, Friedman E, Ghiorzo P, Gillanders EM, Goldstein AM, Gruis NA, Hansson J, Harland M, Helsing P, Hocevar M, Hoiom V, investigators IBD, Ingvar C, Kanetsky PA, Landi MT, Lang J, Lathrop GM, Lubinski J, Mackie RM, Martin NG, Molven A, Montgomery GW, Novakovic S, Olsson H, Puig S, Puig-Butlle JA, Qmega, Investigators Q, Radford-Smith GL, Randerson-Moor J, Group SDHS, van der Stoep N, van Doorn R, Whiteman DC, MacGregor S, Pooley KA, Ward SV, Mann GJ, Amos CI, Pharoah PD, Demenais F, Law MH, Newton Bishop JA, Barrett JH, Geno MELC. The effect on melanoma risk of genes previously associated with telomere length. *J Natl Cancer Inst* 2014;106.
- 53 Prescott J, Wentzensen IM, Savage SA, De Vivo I. Epidemiologic evidence for a role of telomere dysfunction in cancer etiology. *Mutat Res* 2012;730:75–84.
- 54 Savage SA, Gadalla SM, Chanock SJ. The long and short of telomeres and cancer association studies. *J Natl Cancer Inst* 2013;105:448–9.
- 55 Aviv A, Hunt SC, Lin J, Cao X, Kimura M, Blackburn E. Impartial comparative analysis of measurement of leukocyte telomere length/DNA content by Southern blots and qPCR. *Nucleic Acids Res* 2011;39:e134.



## ***DCAF4*, a novel gene associated with leucocyte telomere length**

Massimo Mangino, Lene Christiansen, Rivka Stone, Steven C Hunt, Kent Horvath, Dan T A Eisenberg, Masayuki Kimura, Inge Petersen, Jeremy D Kark, Utz Herbig, Alex P Reiner, Athanase Benetos, Veryan Codd, Dale R Nyholt, Ronit Sinnreich, Kaare Christensen, Hisham Nassar, Shih-Jen Hwang, Daniel Levy, Veronique Bataille, Annette L Fitzpatrick, Wei Chen, Gerald S Berenson, Nilesh J Samani, Nicholas G Martin, Sarah Tishkoff, Nicholas J Schork, Kirsten Ohm Kyvik, Christine Dalgård, Timothy D Spector and Abraham Aviv

*J Med Genet* published online January 26, 2015

---

Updated information and services can be found at:

<http://jmg.bmj.com/content/early/2015/01/23/jmedgenet-2014-102681>

---

*These include:*

### **Supplementary Material**

Supplementary material can be found at:

<http://jmg.bmj.com/content/suppl/2015/01/23/jmedgenet-2014-102681.DC1.html>

### **References**

This article cites 54 articles, 21 of which you can access for free at:

<http://jmg.bmj.com/content/early/2015/01/23/jmedgenet-2014-102681#BIBL>

### **Open Access**

This is an Open Access article distributed in accordance with the Creative Commons Attribution Non Commercial (CC BY-NC 4.0) license, which permits others to distribute, remix, adapt, build upon this work non-commercially, and license their derivative works on different terms, provided the original work is properly cited and the use is non-commercial. See: <http://creativecommons.org/licenses/by-nc/4.0/>

### **Email alerting service**

Receive free email alerts when new articles cite this article. Sign up in the box at the top right corner of the online article.

---

### **Topic Collections**

Articles on similar topics can be found in the following collections

[Open access](#) (120)

[Cancer: dermatological](#) (41)

[Dermatology](#) (229)

[Immunology \(including allergy\)](#) (552)

---

To request permissions go to:

<http://group.bmj.com/group/rights-licensing/permissions>

To order reprints go to:

<http://journals.bmj.com/cgi/reprintform>

To subscribe to BMJ go to:

<http://group.bmj.com/subscribe/>

## Notes

---

To request permissions go to:  
<http://group.bmj.com/group/rights-licensing/permissions>

To order reprints go to:  
<http://journals.bmj.com/cgi/reprintform>

To subscribe to BMJ go to:  
<http://group.bmj.com/subscribe/>